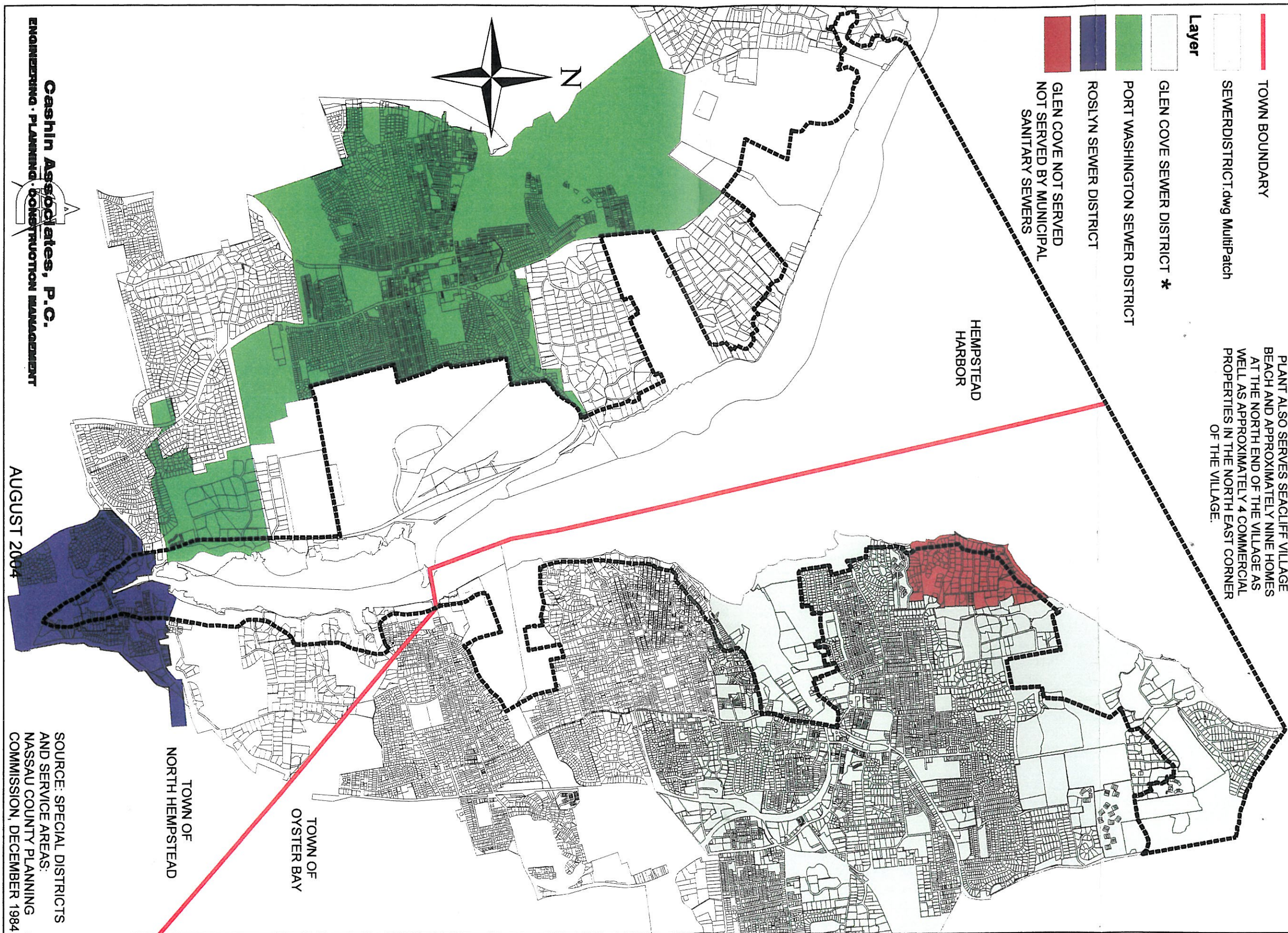


MAP 3-8
 HARBOR MANAGEMENT PLAN FOR
 HEMPSTEAD HARBOR
 SEWER DISTRICT BOUNDARIES

Legend

- STUDY AREA BOUNDARY
- TOWN BOUNDARY
- SEWERDISTRICT.dwg MultIPatch
- Layer
- GLEN COVE SEWER DISTRICT *
- PORT WASHINGTON SEWER DISTRICT
- ROSLYN SEWER DISTRICT
- GLEN COVE NOT SERVED NOT SERVED BY MUNICIPAL SANITARY SEWERS

* THE GLEN COVE SEWAGE TREATMENT PLANT ALSO SERVES SEACLIFF VILLAGE BEACH AND APPROXIMATELY NINE HOMES AT THE NORTH END OF THE VILLAGE AS WELL AS APPROXIMATELY 4 COMMERCIAL PROPERTIES IN THE NORTH EAST CORNER OF THE VILLAGE.



Cashin Associates, P.C.
 ENGINEERING · PLANNING · CONSTRUCTION MANAGEMENT

AUGUST 2004

SOURCE: SPECIAL DISTRICTS AND SERVICE AREAS: NASSAU COUNTY PLANNING COMMISSION, DECEMBER 1984